

A summary of equity-related priorities in Ontario's child and youth mental health and addictions sector

The Knowledge Institute on Child and Youth Mental Health and Addictions (the Knowledge Institute) aims to build capacity to advance equity, diversity, inclusion, and anti-racism (EDIA-R) within Ontario's child and youth mental health, substance use health, and addictions sector (the sector). Advancing EDIA-R will foster a more inclusive and equitable system.

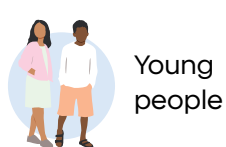
To support this work, the Knowledge Institute led a priority-setting activity to better understand the sector's needs and available resources. The results of this work will inform further development of meaningful resources to support the sector in providing equitable, inclusive, and affirming care.

The full report of this work is available on our [EDIA-R webpage](#), where you will also find Knowledge Institute tools, resources, and information related to EDIA-R.

What did we do?

We conducted a needs assessment and resource mapping exercise to identify sector needs and priorities.

The **needs assessment** included **15** consultations with four key groups:



Resource mapping identified and reviewed **73** existing and in-development EDIA-R resources:

30 from the Knowledge Institute

43 from other organizations

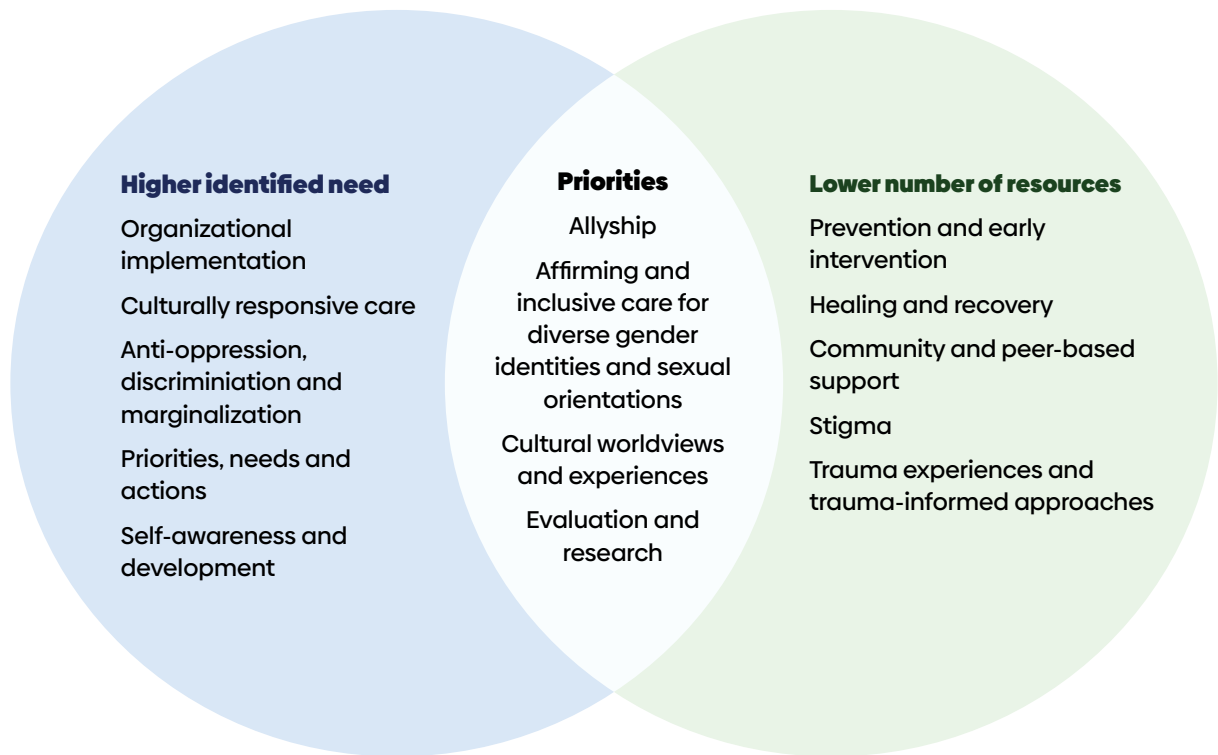


We organized topics into 25 broader categories to better understand common focus areas. We identified priorities by looking at where the greatest needs overlapped with the largest gaps in available resources.

What did we find?

Our work identified four priority topic categories, as seen in the middle of this figure:

Figure 1. Identifying priority topic categories. The four priority topic categories represent the intersection of topic categories frequently mentioned in the needs assessment and those with limited availability among existing resources.



What's next?

The Knowledge Institute will use these findings to develop new tools and resources to advance EDIA-R principles and build capacity in a system that aims to prioritize anti-racism, enable identity-affirming care, and support reconciliation, which is a key area of focus in our [strategic plan](#). This work also aligns with Children's Mental Health Ontario's (CMHO) [Provincial Health Equity Strategy](#).